

Leica Geosystems

QuickStart Guide: LGS Converter Tool

Product Leica LGS Converter Tool 2023.1.0
Date 13 December 2023
From Reality Capture Division - Software Product Management

Contents

Introduction.....	2
Installation	2
Program usage.....	3

Introduction

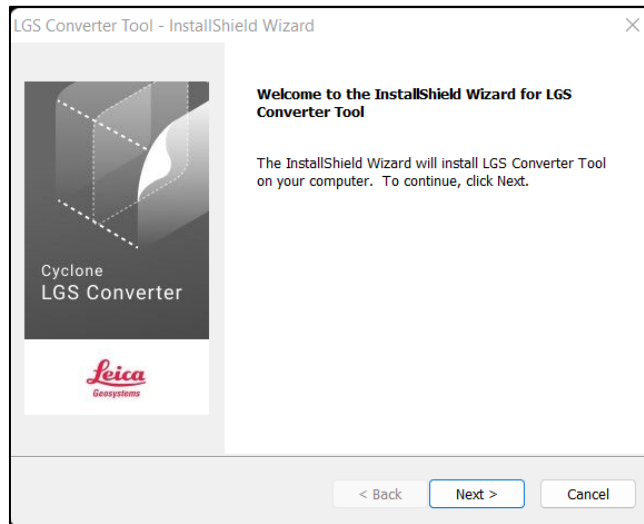
The Leica LGS Converter Tool is a standalone program that allows the user to convert LGS file(s) to LGSx file(s) and save them directly to the user-selected directory location.

No license is needed to run the LGS Converter Tool

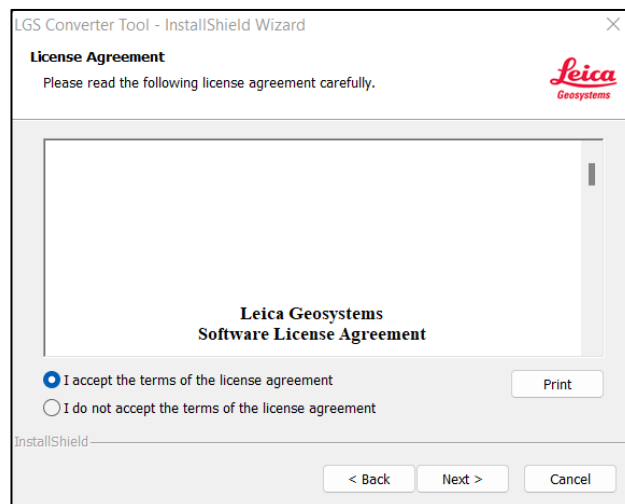
Please make sure you have the latest graphic card drivers installed from the manufacturer's website.

Installation

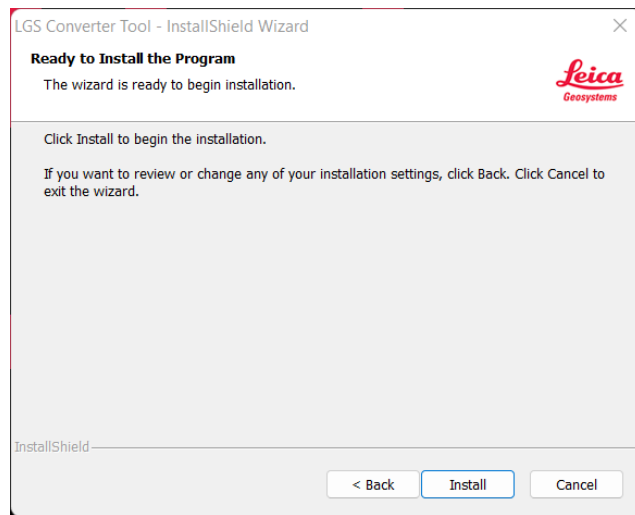
1. Click on the install file to start the installation process:



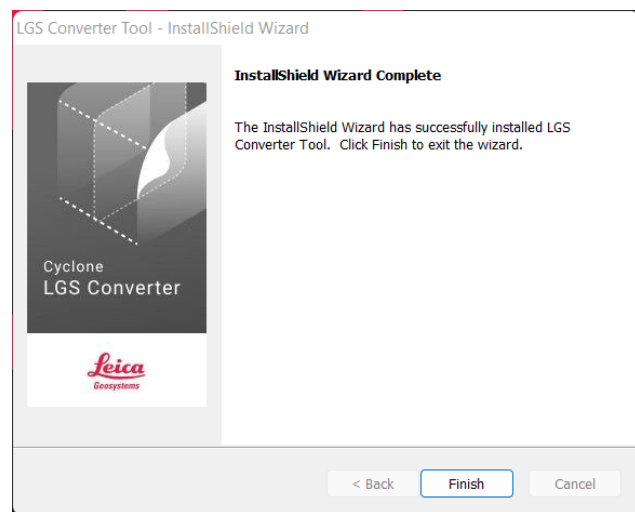
2. Click **Next**, accept the licencing agreement and click **Next** to proceed:



3. Click **Install** to complete the installation process:

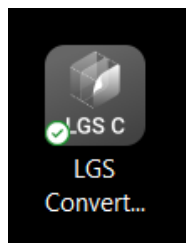


4. Click **Finish** to close the InstallShield Wizard:

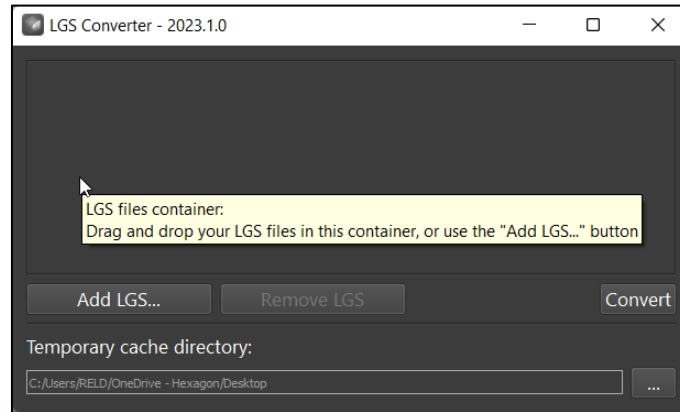


Program usage

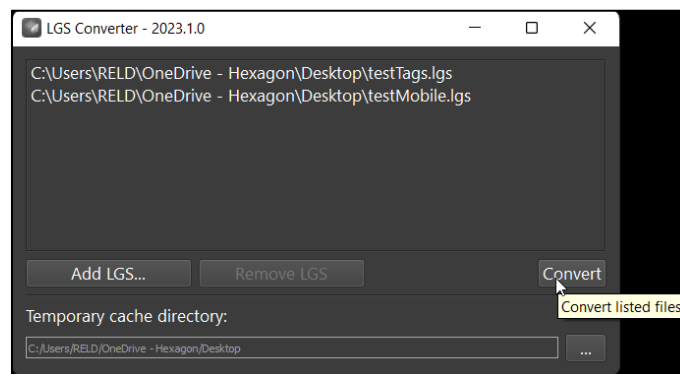
1. Click on the LGS Converter Tool icon on your desktop to start the program:



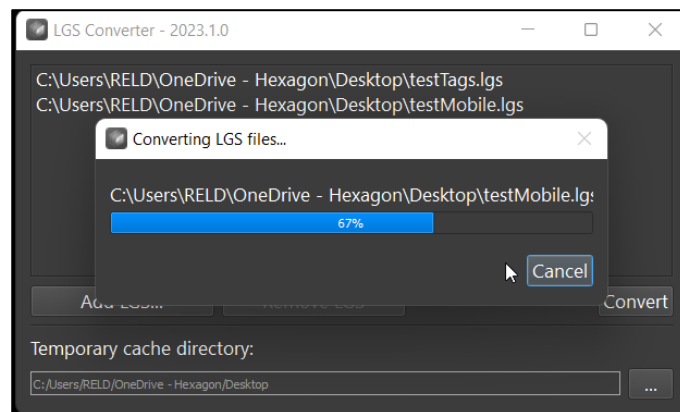
2. Click **Add LGS** to load LGS files from your local storage.



3. Click **Convert** to begin the conversion process.



4. File conversion will begin.



5. When conversion is complete. Click **OK** to complete the conversion and close the program:

